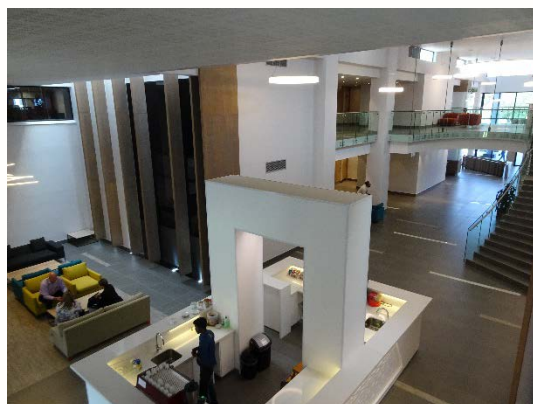
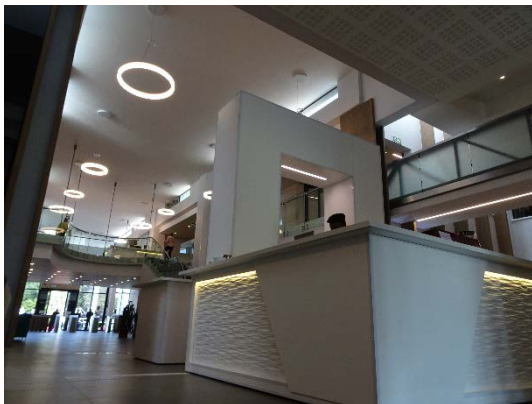


AVI Limited – Head Office Extensions and Upgrade to Existing Facade



Client: AVI Limited

Location: Bryanston

Date: Current

Value: R58 Million

The construction of a new semi basement parking area, new office area, circulation areas, canteen and new parking deck.

The contract presents a number of challenges namely, restricted access, working within the confines of a live environment where buildings are currently in use by the employer. The success of this project is dependant, on the co-operation of all stakeholders, detailed planning, sequencing and co-ordination of access requirements with the employer's representative.